



# The Brewer's League Journal



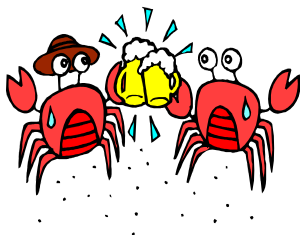
Volume 9, Issue 6

June 2004

**Brew for  
The  
ESF!**

## ***Inside this issue:***

      		
 Karen's Adventure	2	
 Odds and Ends	3	
 Thank You	4	
 Big Brew Pictures	4	
      		



## **Big Brew Wrap-up and Thanks**

By Will Fredin

The Big Brew was a great success and Linda and I would like to thank all of you who participated. Together the club brewed 55 gallons, which I think was a little low, but the average gravity of all the brews was high at 1.065.

I would also like to thank our outside supporters (in no specific order), Hop Union, Wyeast, Larry's Homebrew, Mountain Homebrew, Diamond Knot, Pyramid Breweries, Georgetown Brewery, Rouge (Issaquah Brewhouse), Mac and Jacks Brewery, and AHA. In your outings, brewing, and drinking, I urge you to support them as they have supported us. They really went out of their way and we are lucky for their support of the smaller brewers.

I am looking forward to next year. Leave that first Saturday in May open and let's hope the weather will be as nice as it was this year.

Thanks again to all,  
Will and Linda

**THE NEXT MEETING WILL BE JUNE 10  
at THE FLYING PIG 7:00PM**

# LET THE ADVENTURE CONTINUE

By Karen Froelich

Originally from sturdy, beer-drinking mid-west roots (Minnesota and Wisconsin), my family moved to Seattle when I was 12. I feel like a native Washingtonian, though I'm not. My current vocation as a public health nurse for the Snohomish Health District has me teaching and consulting with child care providers on issues of child health and safety. I got interested in brewing when I developed a fondness for "dark" beer. Back in the early 90's that meant Henry's Dark or Guinness. There wasn't much to choose from on grocery store shelves. The adventure started in 1995 when I got a brewing kit for Christmas (plastic bucket, racking cane, tubing, hydrometer, etc.). My first 2 batches were extract kits, one great stout and a second brown ale which was contaminated. Discouraged, I did not brew for about 8 years...until I met Bob Winchell. Now that's a story to be shared over a good Imperial Stout or a fantastic barleywine. I've had mixed results, but with the encouragement of the GEBL, I am still learning. My lessons have included fermentation temperature, all grain recipes, and different brew systems. Belonging to this club gives me an opportunity to sample a wide variety of styles. Let the adventure continue!



*Karen's first all grain brew at Big Brew*



*Shane explains to Karen about how easy it is to lose a thumb while brewing on his system*

**GEBL****TASTING/SPEAKER CALENDAR**  
**2004**

June-	Browns and Milds
July-	Speaker
August-	IPA
September-	Speaker
October-	English Bitters
November-	Speaker
December-	Winter Warmers (Big Beers)

**AHA Style Calendar****August 2004** Wheat Beer**September/October 2004** Smoked Beer**November/December 2004** IPA**Library Books**

We have several books and magazines missing from our library.  
If you have had a GEBL library book for over a year, contact Will Fredin, at 360-691-7042.

**GEBL Chemicals Still Available**

1 gallon of Star San	\$24.68/bottle
4- 32 oz. bottles of Star San	\$11.58/bottle
1 lb. packages of PBW	\$2.63/lb.

Contact Shelley 360-691-7042

**GEBL****TASTING/SPEAKER CALENDAR**  
**2005**

January-	Porters
February-	Speaker
March-	Open Lagers
April-	Speaker
May-	Belgians

**What's Hopping**

**Brew for the Evergreen State Fair.** Entries are due August 7 and 8 at the fair grounds

**AHA National Homebrew Conference June 17-19:** Las Vegas, Nevada. See [www.beerandloafing.org](http://www.beerandloafing.org) for more details.

**Summer Brewfest June 18-20:** St. Edward State Park, Kenmore. Go to [www.washingtonbrewfest.com/summer/index.html](http://www.washingtonbrewfest.com/summer/index.html) for more information

**Seattle International Beerfestival, July 30-Aug 1:** Seattle Center, [www.seattlebeerfest.com](http://www.seattlebeerfest.com) for more information

**Same recipe competition: August 7:** GEBL BBQ, hosted by the Albrights.

**BJCP Judges in GEBL**

**Lori Brown**  
**Jeff Dalziel**  
**Fred Farris**  
**Dennis Fugier**  
**Louise Fugier**  
**Philip Spanel**

**Gordon Legg**  
**Marc Milrod**  
**Jeannie**  
**McWilliams**  
**Val Oliver**  
**Scot Oliver**

**GEBL Shirts Still Available**  
Contact Shane  
425-346-6733



# GEBL Thanks

AHA

Diamond Knot

Georgetown Brewery

Larry's Homebrew Supply

Mac and Jacks Brewery

Mountain Homebrew

Pyramid Breweries

Hop Union

Rouge (Issaquah Brewhouse)

Wyeast

**For the generous raffle item donations for  
Big Brew 2004**

