



# The Brewer's League Journal



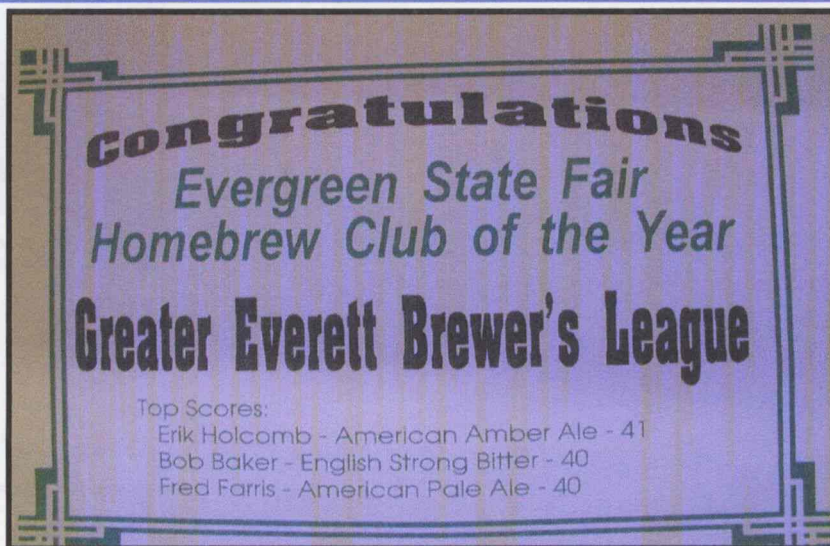
Volume 5, Issue 7

September 2000



## Inside this issue:

American Hop Museum	2
Thanks to Homer Brewing	2
Pub Crawl 2000	3
Dervish Concert	4
August tasting results	4



Also participating: Shelley Albright- Best in class-American Lagers  
 Jack Hughes and Howard Holcomb

## 2000 Style Calendar

September-**German Amber Lager** (AHA category 9 A/B Octoberfest/  
 Maerzen, Vienna Lager)

October- **Red Hook ESB Clone** (GEBL same recipe extract or all grain com-  
 petition) or **Historical** (AHA category 24)

November- **Scottish Ale** (AHA categories 5 & 11b) Come on boys, get your  
 kilts on and brew this beer!

December- **Imperial Stout/Barleywine** (AHA categories 12 a-c English and  
 American Style Barleywines. Russian Imperial Stout.

**The next meeting will be September 14, at The Flying Pig**

The tasting is: **Octoberfest/Maerzen, Vienna Lager**





## **American Hop Museum**

**By: Shelley Albright**

If you are taking a trip over to the Yakima valley to take part in the hop harvest festivities, a place well worth taking in is the American Hop Museum located in Toppenish.

When you first arrive at the museum, you will notice that one side of the building has three murals depicting hop harvests of years past. You will want to take a few minutes to stop and study these fine works of art and maybe shoot a picture.

Soon after walking through the door, you will be asked if you want to view a short video. I think the video was put out by the USDA. It tells interesting facts about the current hop harvest in the Yakima Valley. I recommend watching the video.

For the remainder of the museum visit, you will learn the history of hop production in the USA. Different exhibits show through reading material, old photos and actual antique equipment how hop production and harvesting has advanced over the years.

Outside you can view old harvesting and bailing equipment. Some of it was shipped from the East Coast, where United States commercial hop production started.

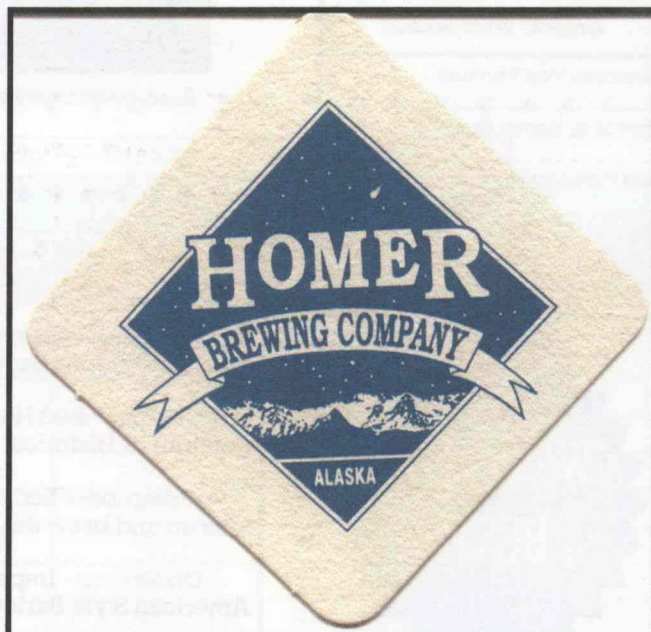
To finish the museum tour, you will go through the gift shop where you will find hop related items including T-shirts, beer mugs, dinner ware, post cards, you name it, etc.

There is no fee to get into the museum, but on the gift shop counter there is box accepting donations.

This is a must visit to all brewers, especially hop heads.



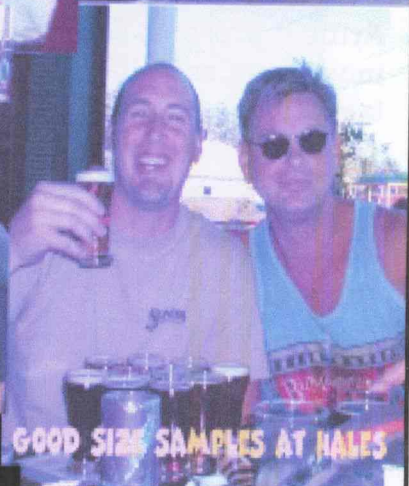
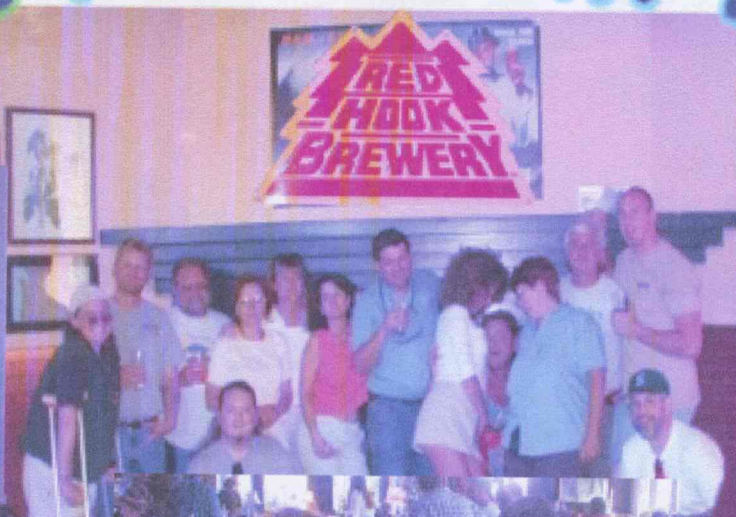
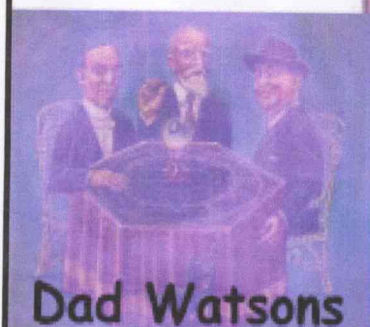
*One of the murals outside of the hop museum*



**A Big thank you to Homer Brewing Company for all of the raffle donations.**



# GEBL Pub Crawl 2000



**BOTTLEWORKS**  
Distinguished beers from around the world

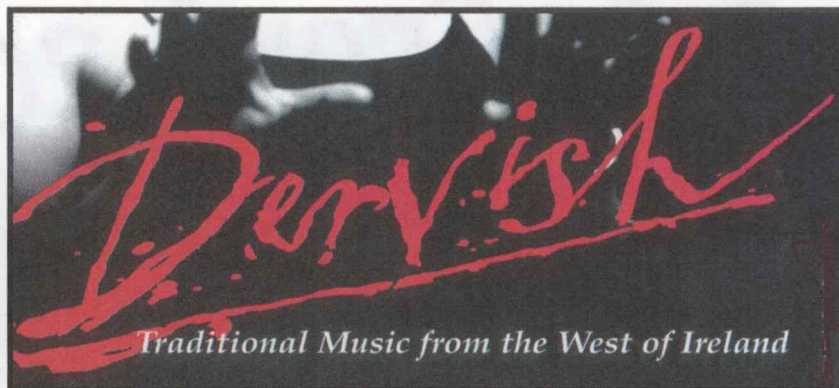
**BIG TIME**  
Brewery & Alehouse



For those of you that could not make this years GEGL pub crawl, you can see the good time that you missed. Thanks again to Fred Farris for making the crawl possible. Maybe we can talk him into organizing another pub crawl next year.



Dervish is from the Irish city of Sligo, Everett's Sister City. The band owns a pub in Sligo and performs



there regularly when not on tour around Europe and the world.

Artbeat Presents: From Ireland DERVISH  
SATURDAY, SEPTEMBER 16, 8 PM  
AT THE EVERETT PERFORMING ARTS CENTER

Artbeat presents DERVISH, an 8-member Irish folk music band, one of the most popular Celtic music groups to play the Northwest. The concert will take place on Saturday, September 16 at 8 pm, at the Everett Performing Arts Center, 2710 Wetmore (at the corner of Everett Street & Wetmore), Everett, Washington.

Tickets are available at the Everett Performing Arts Center (2710 Wetmore), (425) 257 8600 Tuesday through Saturday, through Ticket Master Outlets (206) 292 ARTS. Prices are \$14.50 to \$17.50. Group discounts are available for 8 or more at 425.444.5052. David Shaw is offering GEBL members a half price discount for tickets. Call him at: 425-649-2234 or e-mail: artbeatshows@juno.com

	August			Tasting		Results		
Brewer:	Howard Holcomb	Howard Holcomb	Erik Holcomb	Tim Martin	Fred Farris	Shelley Albright	Ken	Erik Holcomb
Beer:	Golden	Current Amber	Dunkelweizen	IPA	Octoberfest	Scottish	Raspberry Porter	Bock
taster 1	32	33	32	17	21	31	23	41
taster 2	32	27	24	36	27	38	28	31
taster 3	36	24	24	17	26	36	30	39
taster 4	35	37	26	25	32	45	28	48
taster 5	31	33	29	29	25	22	40	42
taster 6	33	25	36	36	42	26	34	38
taster 7	40	32	34	18	18	26	32	39
taster 8	40	25	35	34	20	23	42	36
taster 9	41	28	31	40	34	42	44	37
taster 10	25	31					34	39
taster 11	25	29	29	32	35	31	37	36
taster 12	33	25	42	36	40	45	45	45
Avg score:	33.58	29.08	31.09	29.09	29.09	33.18	34.75	39.25