



The Brewer's League Journal

A Monthly Newsletter for the Greater Everett Brewer's League

New Year / New Leaders

...And Here They Are

Properly nominated, discussed, laughed about, and finally elected by ballot. We have new leadership in our midst. **Chuck Walker** received the nod as our new *Fearless Leader* (President). We are really looking forward to the lively new places Chuck will take our group (boy talk about heaping on the pressure). I have no doubt that we will probably find ourselves in the *Casino Tavern* before the end of this year. I wonder if you can mount a fermentor on a *Harley*?



Jim Jensen is our new *Chief Executive in Waiting* (Vice President), and Jim hasn't wasted any time getting the ball rolling.



Jim has called an executive committee meeting for the first Thursday in February, to discuss the direction the new group will take us. I like this take-charge attitude. Besides, he's a "Cool Dude" to boot.

Jeff Paden is once again our *Chief Financial Officer* (Treasurer), and will no doubt continue to do a bang-up job handling our huge treasury department. In the world of high finance, we need to be able to trust our investment management to someone big enough to stave off the depraved... er or is that deprived? Well, whatever.



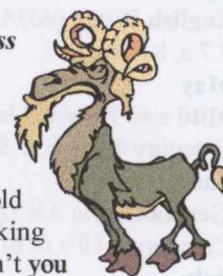
Shelley Albright was unanimously elected to the *Chief Scribe and Pencil Breaker* (Secretary) position. I hope Shelley has taken some shorthand lessons, because there certainly is a lot of information to get down during one of our meetings. We may find more chewed pencil stubs than empty beer glasses at her spot.



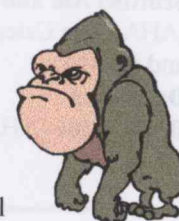
Louise Fugier is our new *Massive Quantities of Data Archivist* (Librarian), and as such will be assuming the duties of maintaining our ever growing collection of goodies from the NET, and the AHA.



Jack Hughes is our new *Director of Hysterically Great Times and Consuming Mass Quantities* (Social Coordinator). As such, Jack (damn but this old goat bears a striking resemblance don't you think?) will be working on getting us to some new and exciting places during the coming year. Perhaps even getting us all over to Ireland for some fresh Irish Moss (although Shelley insists that he brought her rotted moss in hopes that someone would brew a beer more peculiar than his now infamous slug bait).



And last but certainly not least, **Gary Albright** is our new *Director of Strong-arming unwitting visitors into suffering our new member rituals* (Membership Coordinator). Gary will be tapping visitors on the shoulder and helping them to feel warm and fuzzy all over (unless of course Shelley catches him doing it).



John Boy

1998 Style Calendar

In order to be consistent with the AHA Club Only Competitions, we will adjust our calendar to attempt to fit the entry deadlines. With that in mind, the following is the Style Calendar for this year.

February

Porter (AHA Style Category # 9 a & b)

March

Pilsener (AHA Style Category # 15 a, b & c)

April

English Bitter (AHA Style Category # 7 a, b & c)

May

Mild and Brown Ale (AHA Style Category # 4 a, b, c & d)

June

German Style Ale (AHA Style Category # 18 a & b)

July

German Style Wheat Beer (AHA Style Category # 19 a, b, c & d)

August

California Common Beer (AHA Style Category # 24 a)

September

Vienna/Märzen/Oktoberfest (AHA Style Category # 17 a & b)

October

Traditional Mead and Braggot (AHA Style Category # 25 a, b, c & d)

November

Scottish Ale and Strong Scotch Ale (AHA Style Category # 8 a, b & c and # 10 b)

December

Barleywine (AHA Style Category # 1 a & b)

Brown Porter

Porter is a very old style of beer dating back to the 1730's and originating from England. It is well balanced and dark with a mild alcohol content. The Yuletide Porter from Mendocino Brewing Co. has an interpretation that places it as a close relative to the Brown Ale category. Brown Porters use roasted malts for color, and a typical 5 gallon batch will have 1 lb roasted barley and maybe 1/4 lb chocolate or black patent.

AHA Category Description:

Medium to dark brown. No roast barley or strong burnt malt character. Light to medium body. Low to medium malt sweetness. Medium hop bitterness. Hop flavor and aroma: none to medium. Fruitiness/esters OK. Low diacetyl OK.

Commercial Examples:

Mendocino's Yuletide Porter
Young's London Porter

flavor and aroma: none to medium. Fruitiness/esters OK. Low diacetyl OK.

Commercial Examples:

Anchor Porter (bottom fermented - very unique)
Boulder Porter
Red Hook Black Hook Porter
Rubicon Porter
Sierra Nevada Porter

February's Featured Brewer



We have decided that this year we would take some time each month to feature one of our club members and share with each of you some of their brewing secrets. This month we decided to feature our newest member: **Bob Baker**.

Bob has been brewing for 1 1/2 years. He started because he had always had an interest in learning how to brew. After talking with a customer of his who brewed and then observing his brother's brewing, Bob decided to take the plunge. He started out with extracts for about 6 months and then made the switch to all-grain, when he realized how much more control he could have over the outcome by doing so.

Bob came out for one of the brewing demonstrations at **The Home Brewery**, and after asking questions and making some observations,

Robust Porter

Robust Porter is also a very old style of beer dating back to the 1730's and originating from England. It was the dominant beer style from the mid-17th century to the mid-18th century, but died out entirely by the 1970's. It has been revived and renditions can be found at most micro breweries in the states. It is well balanced and almost black with a mild alcohol content. It uses roasted malts for color and also derives some bitterness from it. A typical 5 gallon batch will have 1 lb roasted barley and maybe 1/4 lb chocolate or black patent.

AHA Category Description:

Black. No roast barley character. Sharp bitterness of black malt, without high burnt/charcoal-like flavor. Medium to full bodied. Malty sweet. Hop bitterness medium to high. Hop

decided it was time to give all-grain a try. He realized that the thickness and body was much more in his control if he went to all-grain.

Bob considers 3 of his brews to be the favorites. Their clever names are an indication of his wry humor: *Dirty Little Redhead*, *Check It Out Stout*, and *Lic. My Porter*, which is a licorice-flavored Porter. He says these are not only his favorites but those of his friends, as they disappear quickly and have to be brewed again!

He likes working on his styles and perfecting them to his own tastes. The most enjoyable part of brewing is the satisfaction of creating a beer that is truly enjoyable and is all your own work. "A well-brewed beer that you've brewed yourself and perfected to taste, gives you a lot of satisfaction."

To beginning brewers, he would say that you don't have to spend a lot of money to be able to brew good beer. You can be resourceful and do some checking around and come up with some very functional alternatives, at an affordable price: Picnic coolers work well for a mashtun. If you are currently brewing extracts and thinking of making the switch to all-grain, give him a call at 360-691-6015 and he'll be happy to share information.

Bob gets inspired as he goes. The challenge of producing a particular style, and tweaking it to his own taste, keeps him going. He generally brews once a week, usually on Sunday. Call him if you're getting started and need some encouragement. Bob lives in Granite Falls with his wife, **Esther**, daughter **Amanda**, 15, and son, **Bruce**, 14.



Scribe Annie

AHA Contests

The AHA has many contests coming up that our club will be entering. The first one involves our club logo. It was

decided to add the word **WASHINGTON** beneath the mug and hand and submit it as our entry. The logo is the one which will appear on our club shirts. The addition of Washington was to clarify where we are from, if we attend out of region events.

We will also be entering the club newsletter competition. The club voted to submit entries for these events, as well as the various brew category events which happen throughout the year. **Jim Jensen's Stout** was the winner at last month's judging and would therefore have been our club entry. Unfortunately, the brew was so good that it is all gone! We will submit 3 bottles of **Jack Hughes'** stout as he was our runner-up. Seems **Jack** had just enough to meet the requirements. That's what happens when y'all brew the good stuff--everyone wants to consume it right away and there's nothing left for the contests!



Scribe Annie

Wanted: Secured Meeting Sites!

Having run into the situation two months in a row, where we were booked and canceled out, we decided we need to have a Plan "B"! Twice now we have reserved space for our meeting and called a day or two before, only to discover that there has been an over-booking and we are the losers. At our January meeting, there was much discussion over how to deal with this and brainstorming on other possible locations.

Scuttlebutt's is an option for a few times a year, but not regularly, due to their size limitation, and they do close earlier than our meetings normally

end. **The Flying Pig** is an option, despite limited parking, that Bob Dokka will check into. *(Editor's note: Bob spoke with both Tom Muñoz and the manager at The Flying Pig and they are anxious to have us meet there. They have even stated that they would make arrangements for us to have food service in the meeting room. This would be an excellent site for meetings. Bob says that they only need a week's notice.)*

John Moore suggested and will check into **The Firehouse**, as a possible site. The Fugiers volunteered to check out **The Oxford Tavern's** downstairs area. Todd will check out **Maxwell's** upstairs area, as another club he belongs to meets there. Are there community centers around where we might meet for no charge? Would they allow us to bring homebrew for judging? All members were asked to be seeking out some other options. Mt. Vernon's **Skagit River Brewery** has offered several times for us to meet there. **Diamond Knot, Whidbey Island Brewery**, and the brewery at La Conner are also options if we were to change our meeting to a Friday or Saturday, to allow members time to drive up. George volunteered use of the Metro Van he drives, which will hold 9 other persons. We might want to do a caravan car pool and visit one or more of these places, as a group, either for a social outing or for a meeting. Sounds like plenty of options for our Executive Committee to mull over.

Ann Jensen suggested that we take turns at having meetings at those homes which could accommodate our large group. The Jensens and Hartlines are willing to offer their homes and Jack Hughes will confer with Jean to see if their home might also be an option. The Hughes location might make it hard to find and best suited for a summer meeting when the daylight lasts longer and one could find it more readily. Ann also

suggested that we consider more potlucks, as we really get to know one another, and possibly rotate meetings and events between local breweries and members' homes. These last ideas seemed to be well received.



Scribe Annie

Sign 'em up Quickly!

The AHA is offering some substantial incentives to those clubs who get their members to sign up as AHA members before June 30, 1998. If you are a new AHA member, you will receive a \$5 discount and only have to pay \$28 for a one year membership. If we increase our club AHA membership by 15%, we can have 10 free entries in the National Homebrew Competition and get a \$5 rebate per new AHA member. If we increase our AHA membership by 25%, we get a year of free entries in the AHA Club Only Competitions, 10% discount on registration at the 1999 National Homebrewers Conference, plus all the other items previously mentioned.

If we increase our AHA membership by 50%, we also receive the 12 books on Classic Beer Styles, at no charge and get a 20% discount on registration at the 1999 AHA National Homebrewers Conference. Joining the AHA has some other benefits, too. You get the magazine, *Zymurgy*, as part of your membership. It is an excellent magazine for all brewers whether you are just getting started or you're an experienced old goat like... well, we all know who. *Editor's note: That last line wasn't attributable to sweet Miss Annie. I think we all know who put it in...*



Scribe Annie

Welcome Back!



We were really happy to see some familiar faces that haven't been

around for a bit, at our January meeting. It was great to have **James Stockard, Todd Zurik, and Jeff Salsbery** back with us. We missed you guys!

We also welcomed some other guests who have joined us at previous meetings. **Lynn Wiley and Andy Goebel** have been a part of our group before and they add a lot of enthusiasm. **Howard Holcomb** was the newest face. We're glad to have y'all and hope everyone will be back with us again.



Scribe Annie

Peckerhead Porter T-Shirts



There was a lot of interest in the T-shirt that John-Boy wore to our last meeting. The shirts have the **Fall Creek**

Brewery logo on the front and the Peckerhead Porter label on the shirt back. These are available for \$20. If there is an interest, contact John @ 425-334-2656 to place your order. They are the work of Hal Hupp, a frequent visitor to our GEBL events. *Editor's note: Hal also has available Fall Creek Brewing Company mouse pads and cool mugs with the logo on them.*

Scribe Annie

Ski or Golf?



Louise and Dennis Fugier are putting together a non-sanctioned GEBL outing. They propose to get a group together to go to Stevens' Pass for cross-country skiing on Saturday, Feb. 21st. You would meet in Monroe and depart @ 9 a.m., arriving about 10:30. The \$26 package would include a lesson, trail pass, and rentals, with the lesson beginning @ 11 a.m.

The group would later drive on to Leavenworth for dinner at the Brewery and stay the night, too. The Leavenworth Brewery will give an official tour either that evening or on Sunday morning, Feb. 22, depending on arrival time. There are a number of hotels available in Leavenworth, with rooms ranging from \$60-\$100. You would return home some time on Sunday afternoon. Contact them at 360-794-0645, if you are interested.

Todd Zurik, who has put together many golf tournaments, is proposing to coordinate a GEBL golf tournament for June or July. He thinks the fund raiser could be held at Walter Hall Golf Course and include a 9-hole course. He's looking for a total of nine foursomes to participate and will be arranging commercial sponsors for the holes. He hopes to raise \$400 to \$500 for the club treasury. If you are interested in helping or being a participant, contact him @ 425-238-0339. He'd love to hear from you. Thanks, Todd, for spearheading this effort.



Scribe Annie

Brews+Blues = Fun for All!



The recent *Winterfest Brew Festival*, held at the Howard Johnson's in Everett, was deemed a success by all who attended. The event ran on both Friday and Saturday nights. The first 500 participants got a complimentary 5 oz. sampler glass and tickets for drinks at the participating booths.

A large number of our members joined the throngs eager to sample, visit, and dance or just enjoy the music and the crowd. Lots of familiar faces were part of the participating breweries and there were also a few new breweries represented, as well. Seems the **Diamond Knot** and **Boundary Bay IPA** were favorites of many of our group. The **Pike Street Brewery Imperial Stout** was another notable.

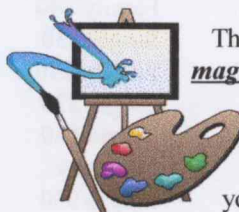
Even the non-beer drinkers could find something to enjoy. The *Vanilla Creme Soda* and *Orange Soda* from **Thomas Kemper** were excellent. The *Cranberry-Apple Cider* was really good from one of the vendors but **Spire Mountain Pear Cider** was the most requested drink from the non-beer drinker's group.

The **Watertown Blues Band** provided some great tunes on both Friday and Saturday night. The music and beverages were so good that a whole group of GEBLites attended both nights. This is an event you'll want to plan to attend next year, if you missed out this year.



Scribe Annie

Color Printer For Sale



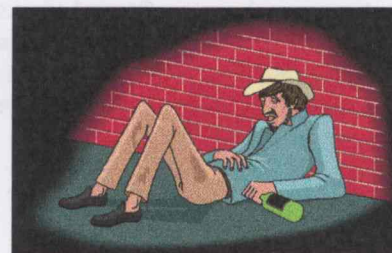
That's right folks, the *magic printer* used to produce this newsletter is now for sale. You see, yours truly is a gadgeholic and has to have the latest and greatest, and as such I am about to upgrade to a new higher resolution printer. The new printer will allow us to put photographs in the newsletter where you can actually tell who is in the photo and what they look like. Don't get me wrong, the printer we've been using is in great condition and has millions of pages left in it, but I want (and that's the key isn't it?) a higher resolution printer. Therefore, we are offering our current printer for sale. The printer is an HP 820 Cse Professional Series and includes 2 black and 4 color cartridges (each cartridge costs \$25.00. That's enough cartridges to last an average user 3 or 4 years. One of the nicest features of this printer is that when you change the print cartridge, you change the print heads. They are one and the same. This printer will take up to 8-1/2 by 14 paper, envelopes and index cards. We are asking \$400.00 for the whole shootin' match. If you are interested, give me a call at (425) 334-2656 or catch me at the meeting.

John Boy

Drinking Responsibly

This topic has come up before and was discussed at great length by the club at several different meetings. We recognize that because our club revolves around alcohol, there is certainly opportunity and likelihood

that it can and will be abused. The club voted and decided that certain concepts/rules need to be in effect to minimize the chance for abuse and to be ready to deal with it, if the situation comes up.



It is the responsibility of each member or guest to monitor their own intake and limit it before it becomes excessive or an issue. Each of us should also feel comfortable with and responsible for letting other members or guests know, privately and tactfully, when they begin to drink irresponsibly. If it is still an issue, the officers collectively should address the situation and cut off consumption by the over-imbibing individual.

We do not wish to be viewed by the community at large as a liability or a problem. We also do not wish to see any of our members or guests put themselves or others at risk, by not drinking responsibly. We particularly do not want to see excessive drinking occur which results in injury or violence. Please do your part to *only* drink responsibly and to help others do the same.



Scribe Annie

Pen Patrol

What do you do with one hundred pens that have your old business name on it, when you change the name of your store to **Homebrew Heaven**? Give them to your kids? Donate them to charity? Recycle them via a Martha Stewart plan? No, the ever ingenious and wily Don Roberts knew exactly what to do. He carried them to the

last GEBL meeting and cleverly concealed them all around the house, in some strange and obscure places. Seems a few other imaginative members joined in and soon about 100 of these pens were placed in some really unusual spots. Several weeks later, we are still encountering them and laughing each time we do. I just want to know, "How come there were no pens in John's pillow case, only mine, and how did Don know which one was mine anyway?"



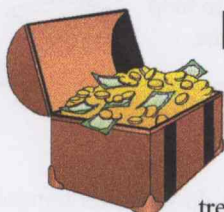
Scribe Annie

Old Newsletters

We (Annie and I) are compiling the business from our GEBL club activities into three volumes for the club archives. To that end, we are looking for anyone who may have kept a copy of our club newsletters. The ones we are looking for are the ones we printed in 1996. That first year, we didn't archive them on the computer, and don't have copies of them. If you have some or all of the 1996 newsletters, we would like to borrow them and get copies made. Please call us at (425) 334-2656.

John Boy

Treasury Report



This is our treasury report duly submitted for the record by Jeff Paden.

Dues Paid during January Mtg.

Baker, Bob	Single/\$30
Bacon, Ralph	Honorary
Crawford, George & Ann Marie	Family/\$40

Dokka, Robert & Barbara	Family/\$40
Fugier, Dennis & Louise	Family/\$40
Hartline, John & Anne	Family/\$40
Hughes, Jack	Single/\$30
Jensen, Jim & Ann	Family/\$40
Knowles, Tim	Single/\$30
Moore, John & Cathy	Family/\$40
Namowicz, Tom	Single/\$30
Paden, Jeff	Single/\$30
Robert, Don	Honorary
Salsbery, Jeff	Single/\$30
Swartos, David	Single/\$30
Zurik, Todd	Single/\$30

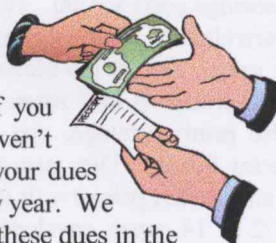
	\$480.00
Raffle	\$ 50.00
subtotal	\$530.00

Previous Balance	\$850.00
current balance on 1/8/98	\$1,380.00

Postage, permits, printer heads paid to Hartlines for GEBL business	(\$103.54)
final balance on 1/18/98	\$1,277.46

Dues Still Due

Just a friendly reminder to those of you who haven't submitted your dues for the new year. We really need these dues in the treasury, especially with our plans to spend some of our hard earned money on the GEBL shirts. Please make every effort to pay your dues as soon as possible. Many of your GEBL benefits depend on it.



Executive Committee Mtg.

As many of you may remember, we have an executive committee made up of the club officers. The purpose of this committee is to conduct club



business outside of our monthly meetings. This was done to spare us much of the decision-making business required for a club during our social time. As such, there is an executive committee meeting scheduled on February 5th. During this meeting, the gavel will be officially passed to the new officers and there will be much discussion as to the direction the club will take during the coming year. Much like our government, this committee represents you as club members and should be aware of your concerns and wishes. If you have something you wish brought up during the meeting (or any meeting), please contact one of the officers and make them aware of your business. If you feel it necessary to attend a committee meeting, please let one of the officers know and they will pass the word on to the rest of the committee. Time is always hard to find on weekday evenings, so the meetings are tightly scheduled. These meetings are not social meetings, but down-to-it, nitty gritty business meetings (I don't know about you, but the picture in my mind looks like cokin' and jokin', eh). Just kidding. I realized I was pontificating, so I'll get off my box. I'm sure you get the picture.

John Boy

About Time For Don and Ralph

During the January meeting, the membership recognized the long-standing contributions of Don and Ralph of *Honeybreez Heaven*, by making them lifetime honorary members of GEBL. The contributions made by these two in raffle prizes, discounts at their

business and continuing support of the club, its members and our brewing education, need to be acknowledged. I would like to ask each and every GEBL member to extend their congratulations and gratitude to Don and Ralph. Without their support, the club wouldn't be the same. Way to go guys! Thank you from all of us.

John Boy

January Tasting Results

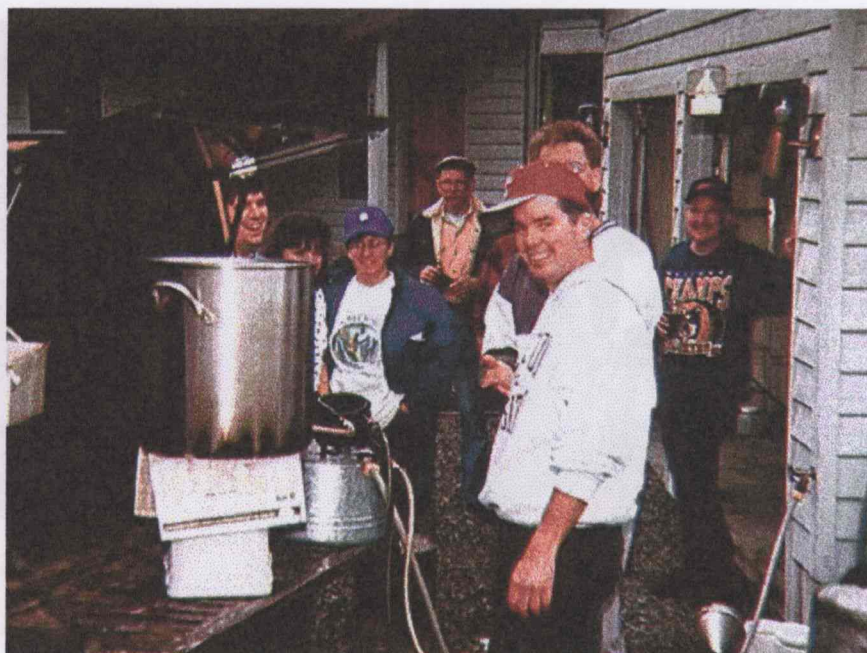
Much to Jim's chagrin, Big John edged him out in the Christmas Ale category during last month's tasting. Oh but the victory is sweet, and spicy (gloat, gloat). It also seems that James Stockard brought a Christmas Ale, but waited until the tasting was over before bring it out for sampling. **Foul!!**

James is a relatively new member, but what's the deal, James? We want to taste your wares too. Don't be afraid of us. We promise to be as brutal and heartless with you as we are with long-term members. Anyway, here's a summary of the scores:

John Hartline	37.1
Jim Jensen	36.8
George Crawford	34.3
Jeff Salsberry	33.3
Chuck Walker	32.8

This month the style is Porter, so let's get 'em ready. I know a lot of you brew this style. Should be a good meeting to spend sampling lots of 'em.

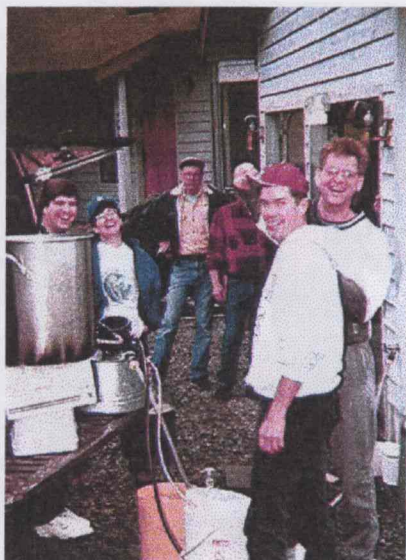
John Boy



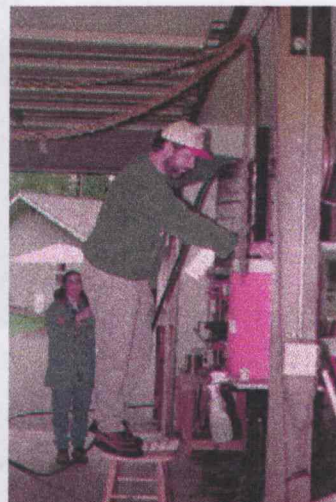
Hail, Hail, The Gang's All Here

And a motley looking crew they are too. Just a sample of the fun to be had at the Centennial Brew held at the Hartline home. If you weren't there, you missed it! Ain't that prophetic?

	Commercial	John Hartline	Chuck Walker	Jim Jensen	Jeff Salsberry	George Crawford
	None					
Taster 1		43	39	35	32	34
Taster 2		40	31	42	40	45
Taster 3		31	27	35	29	31
Taster 4		43	33	44	40	44
Taster 5		41	32	40	35	
Taster 6		40	36	45	40	44
Taster 7		35	33	35	38	31
Taster 8		35	32	43	30	31
Taster 9		45	32	44	34	38
Taster 10		34	44	27	31	27
Taster 11		28	38	14	14	26
Taster 12		33	29	26	27	22
Taster 13		35	31	34	32	31
Taster 14		30	26	33	32	37
Taster 15		38	24	33	31	32
Taster 16		36	41	41	37	37
Taster 17		42	32	39	41	32
Taster 18		35	23	43	29	39
Taster 19		40	41	46	41	36
Total	0	704	624	699	633	617
Average	0.0	37.1	32.8	36.8	33.3	34.3



Looks like they started one too many siphons orally!



Damned stuck mash anyway

The Greater Everett Brewer's League
6709 - 44th Street N.E.
Marysville, WA 98270-6900

Next Meeting is February 12 at Buck's American Cafe, corner of Hewitt & Pine
Style of the month is Porter. Bring your best for the competition.